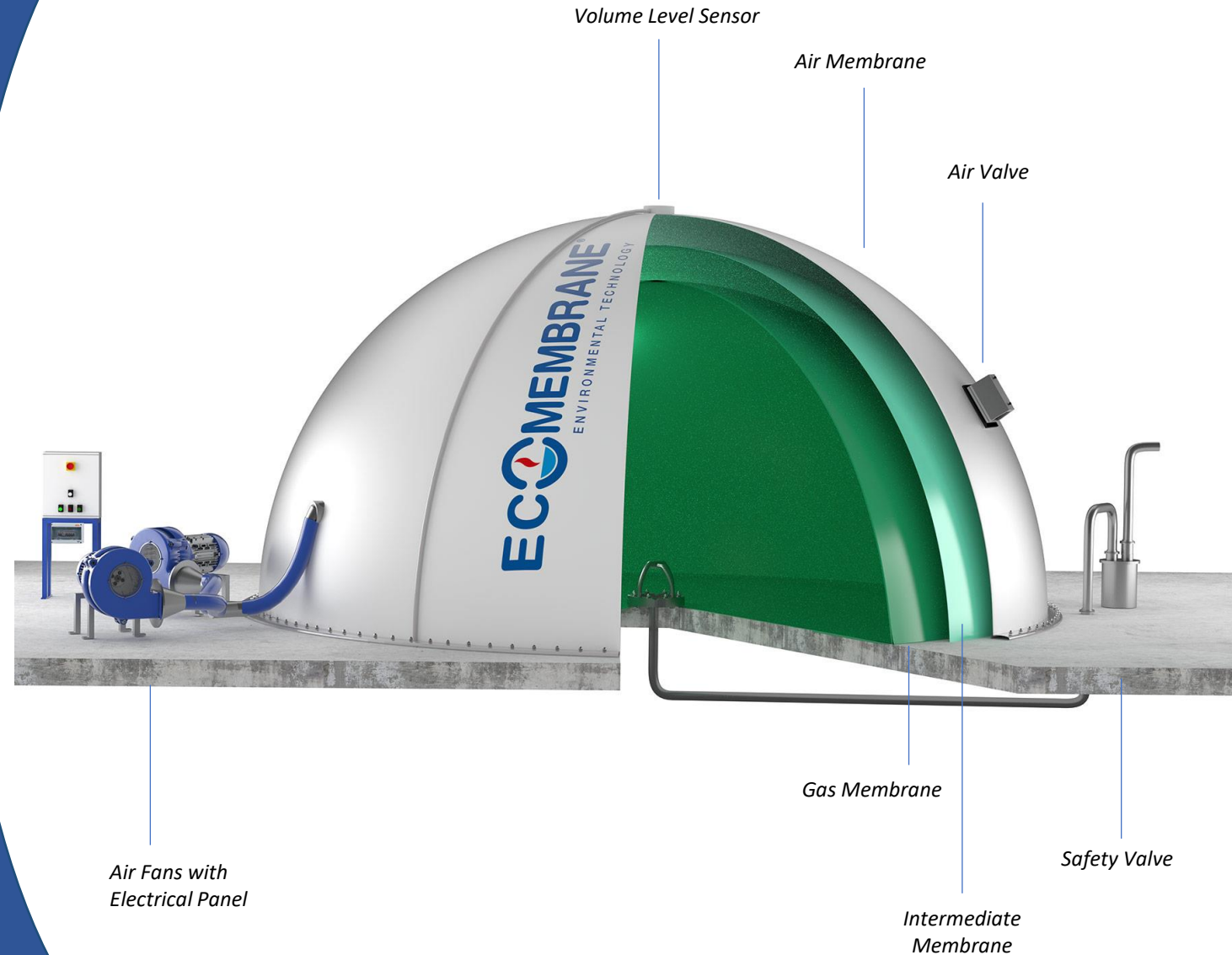


ECOMEMBRANE
ENVIRONMENTAL TECHNOLOGY

3MASTER Gasholder



- Designed to store biogas made from anaerobic digestion and organic waste and sludge;
- The exclusive 3MASTER system is designed to form an upper air chamber that gives a pneumatic push on the biogas chamber, which keeps the biogas chamber at a prefixed and constant positive pressure;
- Gas and Air chambers are divided from each other by a double membrane layer that ensures complete safety against the formation of a dangerous air and gas mixture;
- The welding edges are covered with an Eco-Safe layer of pure PVC that stops every porosity of the fibres to the biogas. The welding process is made following the quality rules of ISO 9001.



3MASTER *Gasholder*

MAIN FEATURES

- High Safety Level;
- Low Energy Consumption;
- Long Life;
- Shape variability.



3MASTER Gasholder

MAIN COMPONENTS

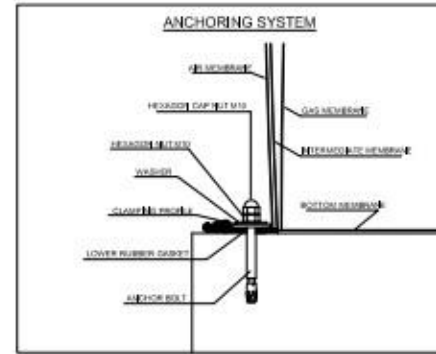
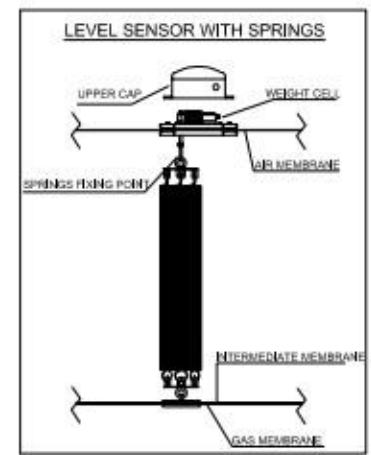
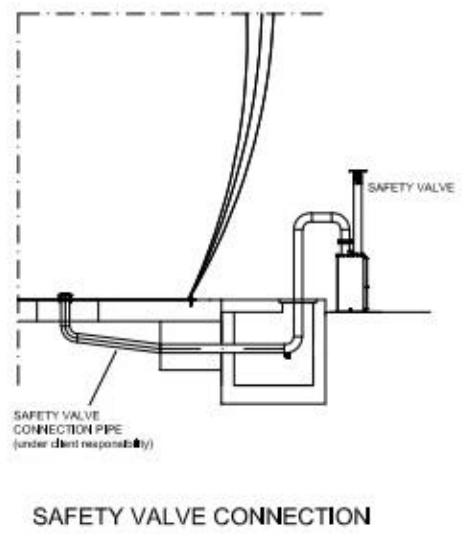
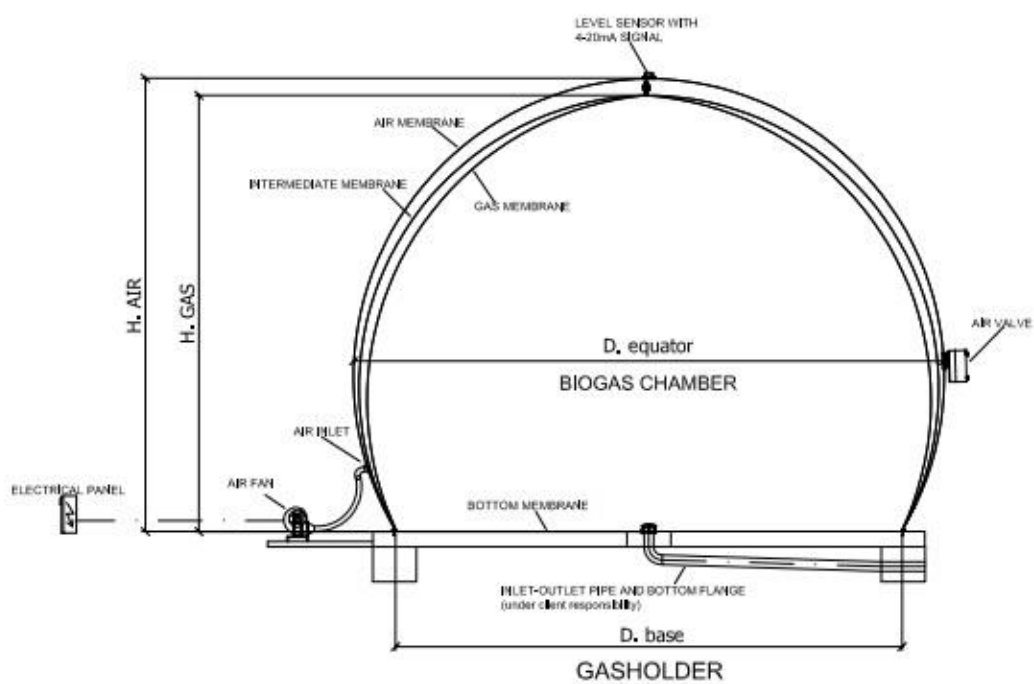
- Anchorage System;
- Air Fan;
- Air Valve;
- Hydraulic Safety Valve;
- Inspection Window;
- Volume Level Sensor 4-20mA

OPTIONAL

- ❖ Methane Detector
- ❖ Air Pressure Transmitter with display



V (m³)	½ Sphere		¾ Sphere	
	∅ _{max} (m)	H (m)	∅ _{max} (m)	H (m)
10	3,40	2,20	3,20	2,70
30	4,90	2,95	4,50	3,60
50	5,80	3,40	5,20	4,20
80	6,80	3,90	6,00	4,80
100	7,30	4,15	6,50	5,10
150	8,40	4,70	7,40	5,80
200	9,20	5,10	8,10	6,30
250	9,90	5,45	8,70	6,80
300	10,50	5,75	9,20	7,10
400	11,60	6,30	10,10	7,80
450	12,00	6,50	10,50	8,10
500	12,50	6,75	10,80	8,40
570	13,00	7,00	11,30	8,70
600	13,20	7,10	11,50	8,90
700	13,90	7,45	12,00	9,30
800	14,60	7,80	12,60	9,70
900	15,10	8,05	13,10	10,10
1.000	15,70	8,35	13,50	10,40
1.200	16,70	8,85	14,30	11,00
1.500	17,90	9,45	15,40	11,80
1.800	19,10	10,05	16,40	12,50
2.000	19,70	10,35	16,90	13,00
2.200	20,40	10,70	17,50	13,40
2.500	21,30	11,15	18,20	13,90
3.000	22,60	11,80	19,30	14,80
3.500	23,80	12,40	20,30	15,50
4.000	24,90	12,95	21,20	16,20
4.500	25,90	13,45	22,10	16,80
5.000	26,80	13,90	22,80	17,40
6.000	28,50	14,75	24,20	18,40
8.000	31,30	16,15	26,60	20,20
10.000	33,70	17,35	28,70	21,80
12.000	35,80	18,40	30,50	23,10
14.000	37,70	19,35	32,00	24,30
16.700	40,00	20,50	34,00	25,70



3/4 sphere

