

**ECOMEMBRANE**  
ENVIRONMENTAL TECHNOLOGY

*CUPOLA M2 Gasholder Dome*

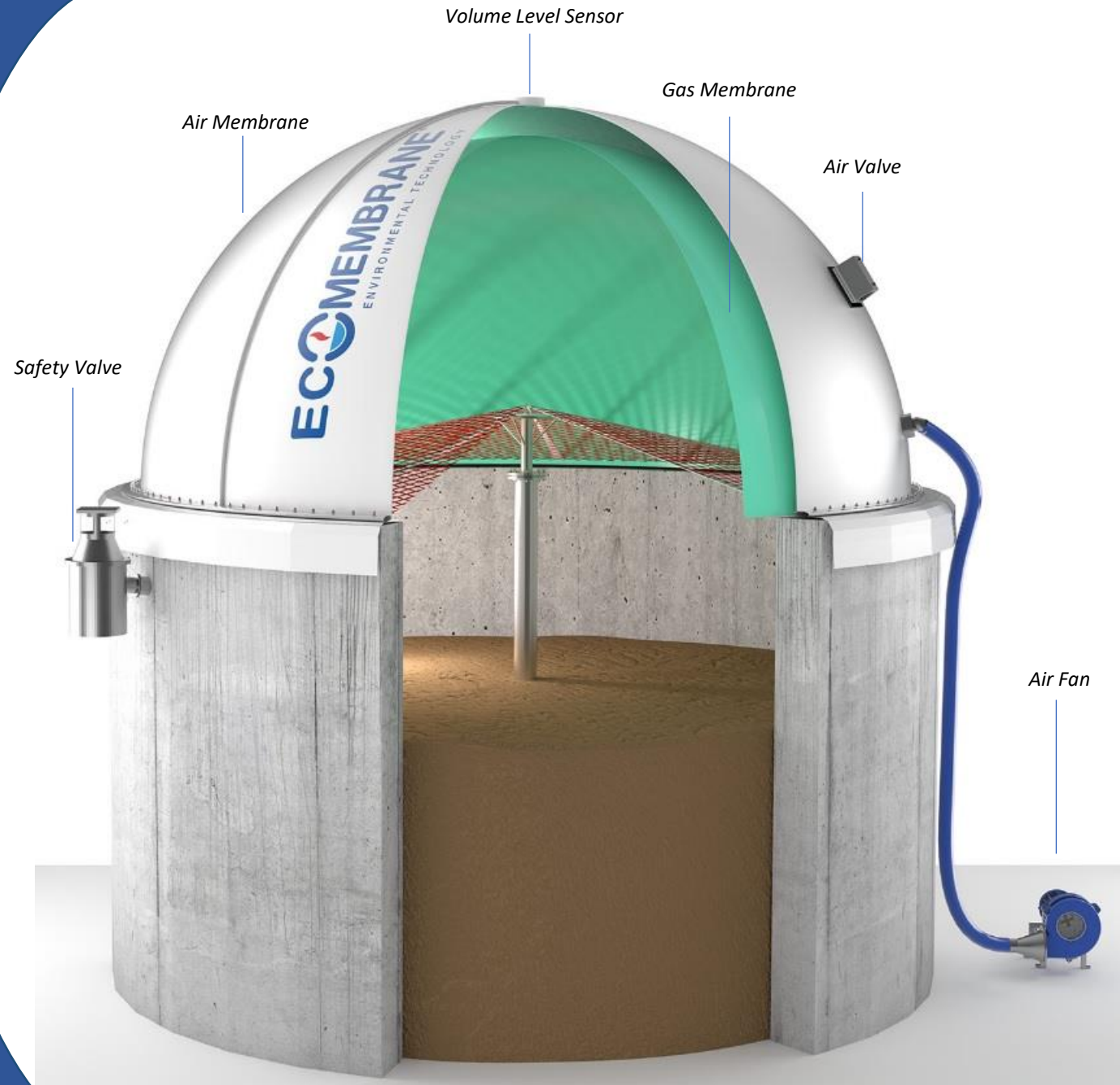


➤ The CUPOLA M2 domes are used in industrial and agricultural plants. They can be installed quickly and can be manufactured with different quality of materials and shapes to suit the needs of the customers.

➤ Membrane made of double-sided PVC coated polyester fiber fabric, UV-microbial-abrasion-biogas resistant, flame retardant B1 according to DIN4102, built with strips of membrane cut;

➤ Manufacturing: welded with a high frequency electronic welding and shaped to obtain the gas-holder form;

➤ The welding edges are covered with an Eco-Safe layer of pure PVC that stops every porosity of the fibres to the biogas. The welding process is made following the quality rules of ISO 9001



# CUPOLA M2

## *Gasholder Dome*

In agricultural biogas plants we have standardized our long tested system made with 2 membranes anchored on the top of the tank and stabilized it at low working pressure by a ventilation system.

**ECCOMEMBRANE®**  
ENVIRONMENTAL TECHNOLOGY



# CUPOLA M2

## Gasholder Dome

### MAIN COMPONENTS

- Anchorage System;
- Air Fan;
- Air Valve;
- Hydraulic Safety Valve;
- Inspection Window;
- Volume Level Sensor 4-20mA
- Net Support System

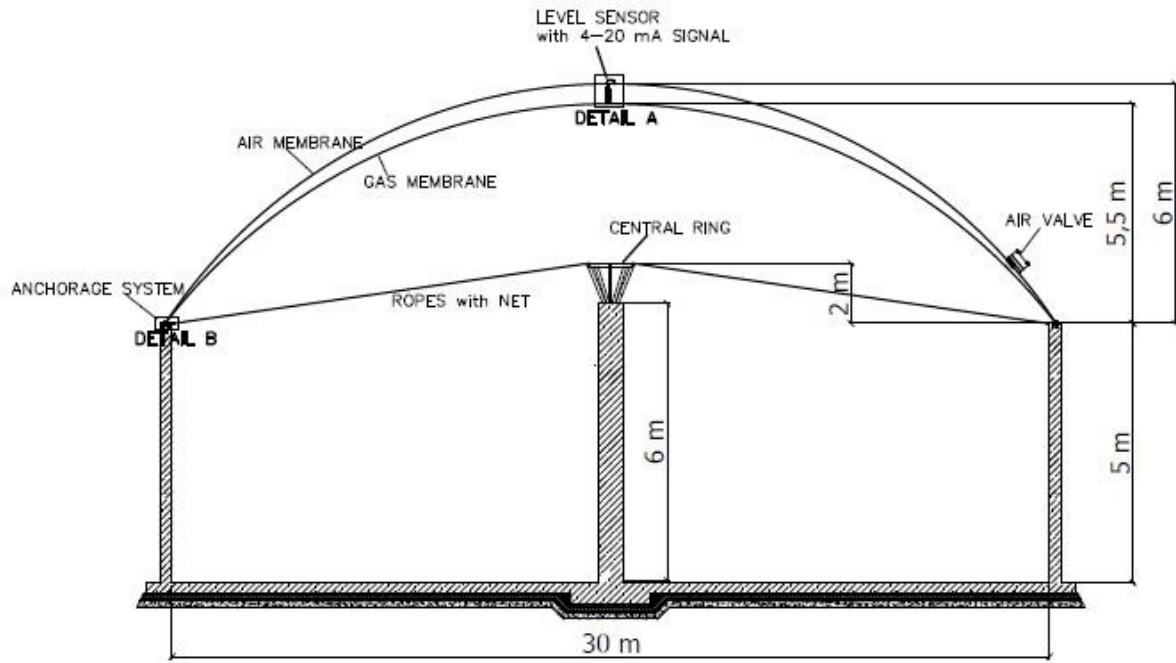
### OPTIONAL

- ❖ *Central Pillar*
- ❖ *Methane Detector*
- ❖ *Air Pressure Transmitter with display*

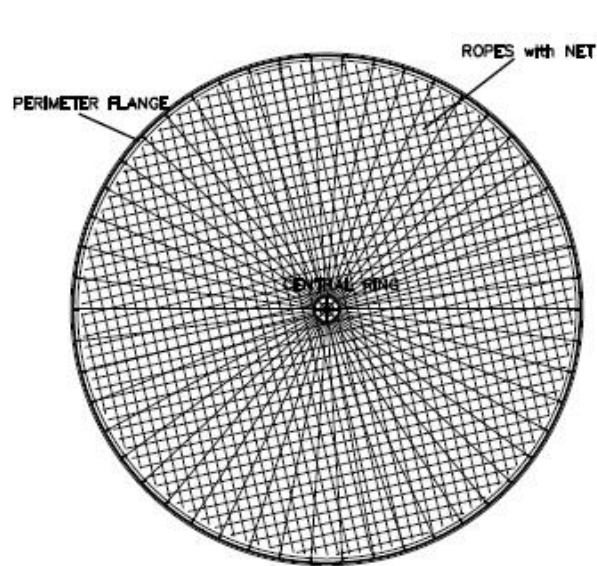
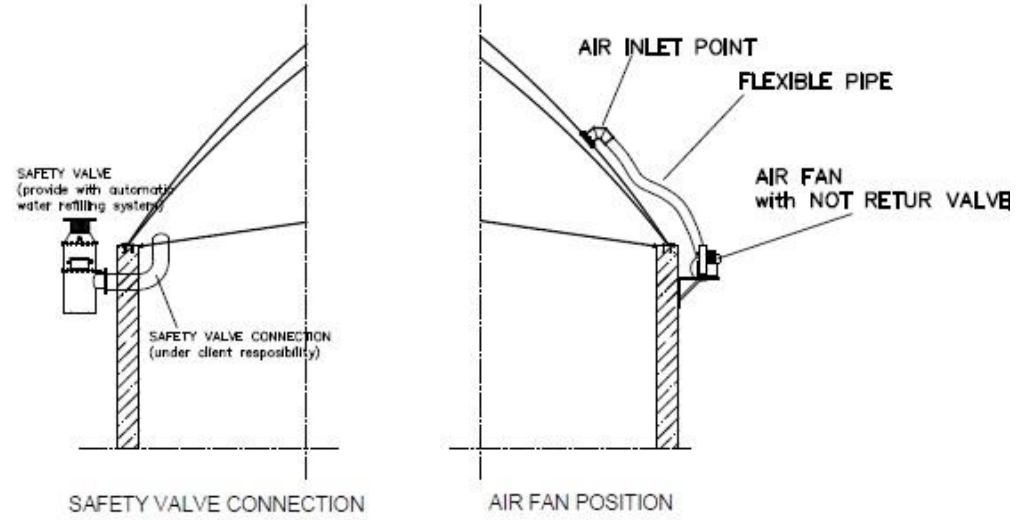


Ø tank (m)	¼ Sphere		½ Sphere	
	H (m)	V (m³)	H (m)	V (m³)
6,00	1,60	18	3,20	54
7,00	1,85	30	3,70	86
8,00	2,10	46	4,20	129
9,00	2,35	67	4,70	184
10,00	2,60	94	5,20	254
11,00	2,85	127	5,70	339
12,00	3,10	166	6,20	441
13,00	3,35	213	6,70	562
14,00	3,60	268	7,20	703
15,00	3,85	332	7,70	866
16,00	4,10	404	8,20	1.052
17,00	4,35	487	8,70	1.263
18,00	4,60	581	9,20	1.501
19,00	4,85	686	9,70	1.767
20,00	5,10	802	10,20	2.062
21,00	5,35	931	10,70	2.389
22,00	5,60	1.074	11,20	2.748
23,00	5,85	1.230	11,70	3.142
24,00	6,10	1.401	12,20	3.572
25,00	6,35	1.586	12,70	4.040
26,00	6,60	1.787	13,20	4.546
27,00	6,85	2.005	13,70	5.093
28,00	7,10	2.240	14,20	5.683
29,00	7,35	2.492	14,70	6.316
30,00	7,60	2.723	15,20	6.995
31,00	7,85	3.052	15,70	7.720
32,00	8,10	3.361	16,20	8.494
33,00	8,35	3.690	16,70	9.318
34,00	8,60	4.040	17,20	10.194
35,00	8,85	4.412	17,70	11.123
36,00	9,10	4.805	18,20	12.107
37,00	9,35	5.222	18,70	13.147
38,00	9,60	5.661	19,20	14.245
39,00	9,85	6.125	19,70	15.403
40,00	10,10	6.613	20,20	16.621

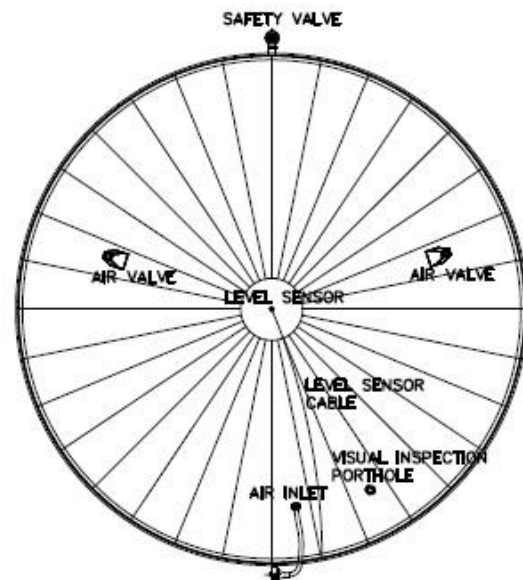




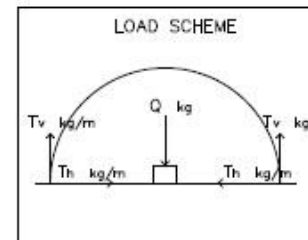
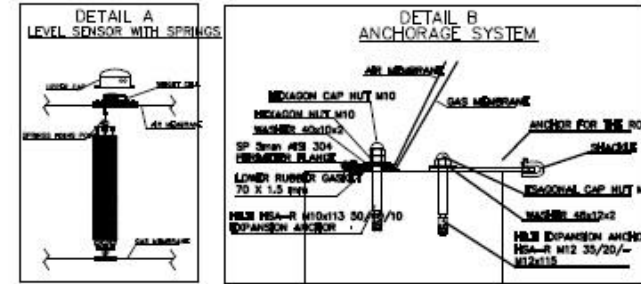
GASHOLDER DOME



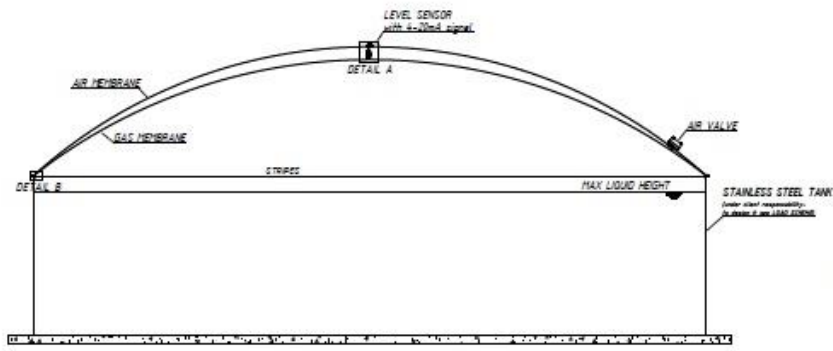
PERIMETER FLANGE - ROPES - NET



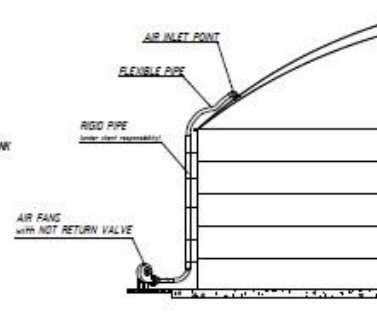
POSITION OF THE ACCESSORIES



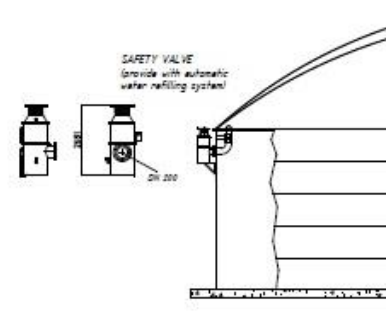
**CUPOLA M2 on concrete digester**



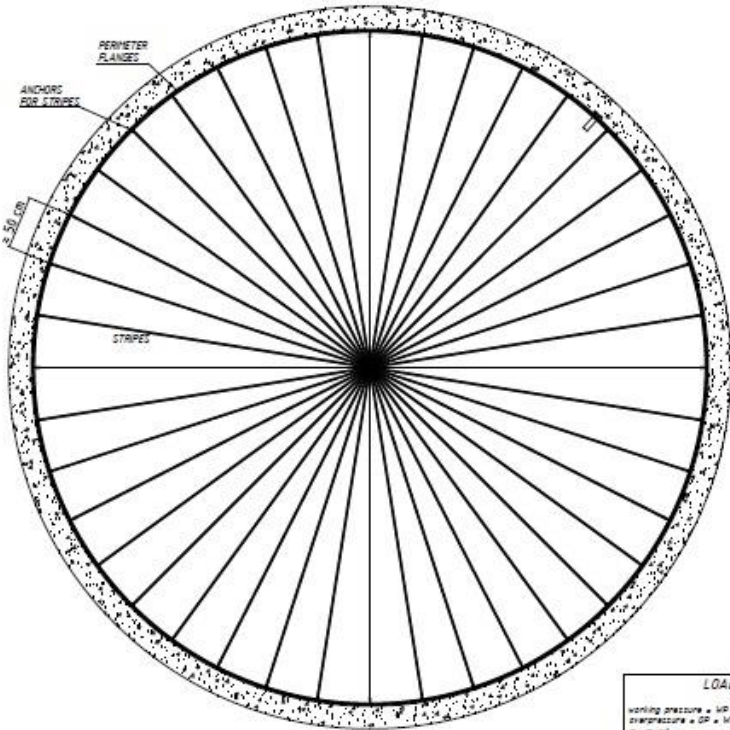
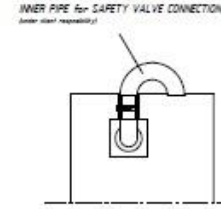
GASHOLDER DOME



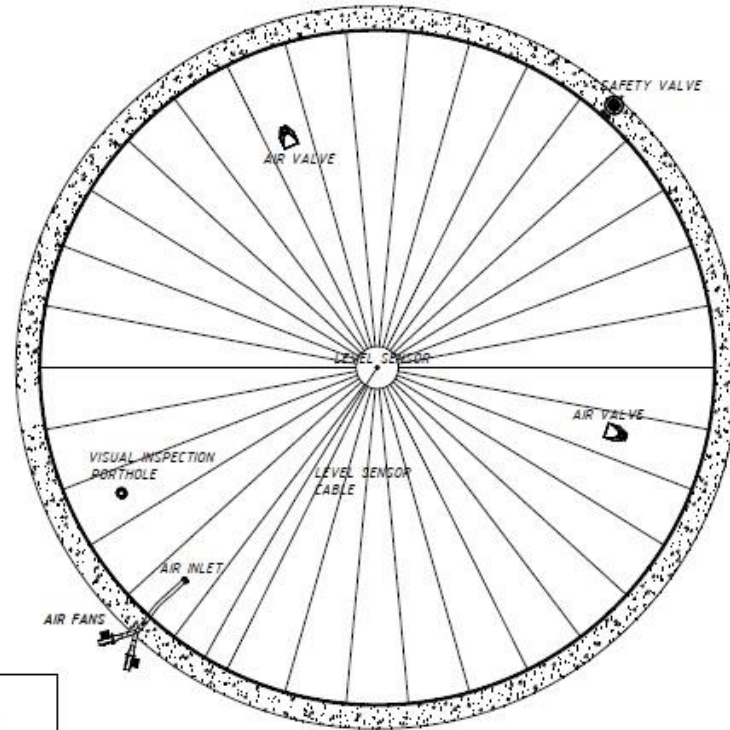
AIR FANS CONNECTION



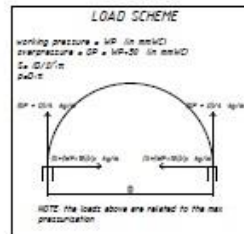
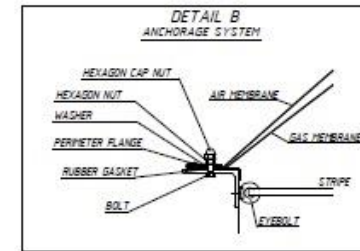
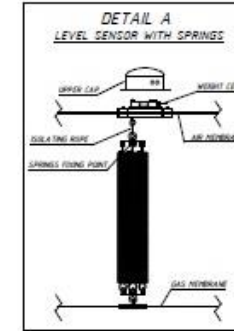
SAFETY VALVE CONNECTION



ANCHORAGE SYSTEM



COMPONENTS LOCATION



**CUPOLA M2 on steel tank**